

Whirlpool

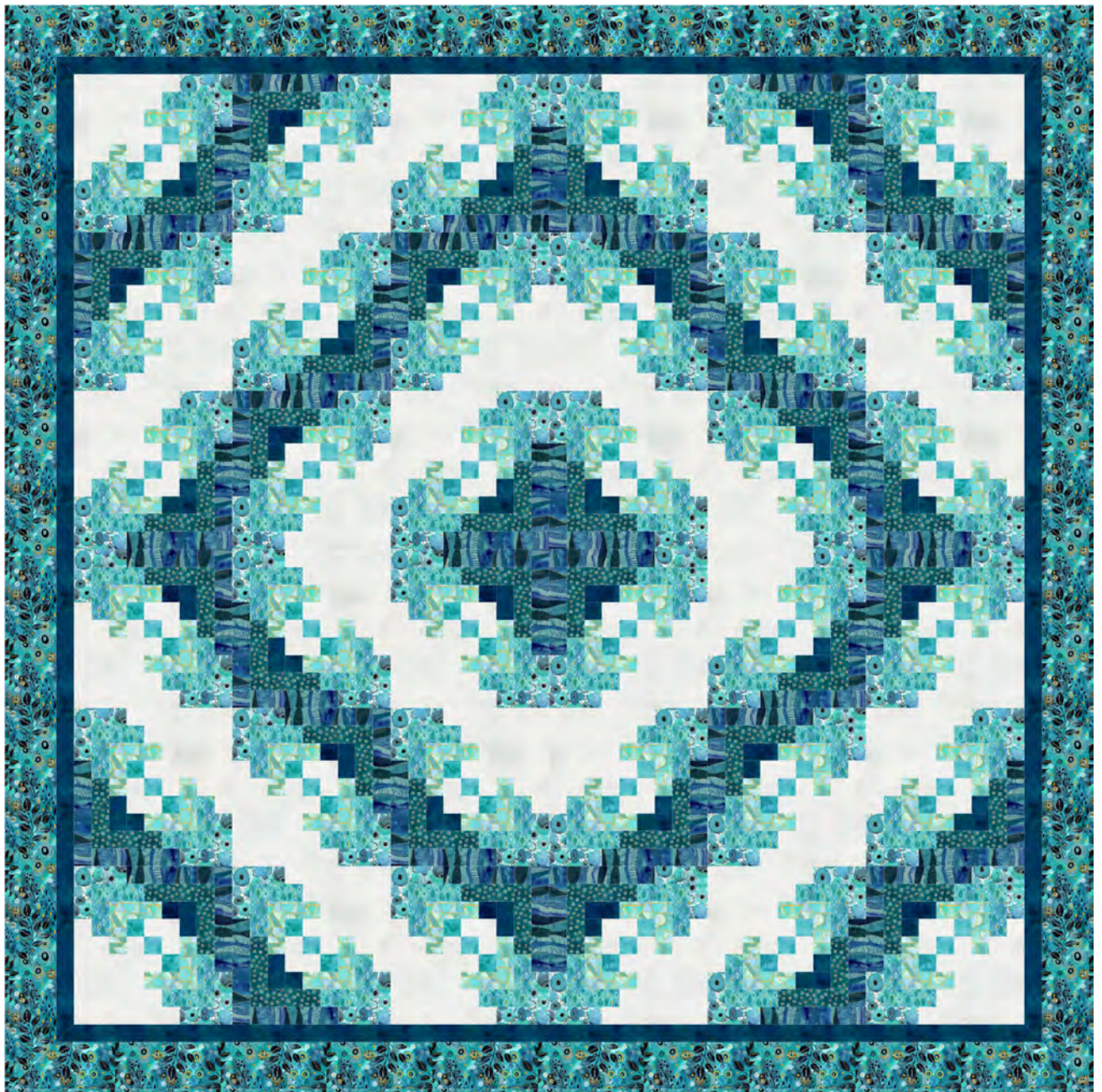
Designed by Christine Stainbrook of Project House 360

Featuring *Ebb & Flow* by Essoldo Design

SIZE: 92" x 92"

CONFIDENT
BEGINNER
SKILL LEVEL

FREE
PROJECT












THIS IS A DIGITAL REPRESENTATION OF THE QUILT TOP, FABRIC MAY VARY.

PLEASE NOTE: BEFORE MAKING YOUR PROJECT, CHECK FOR ANY PATTERN UPDATES AT WINDHAMFABRICS.COM'S FREE PROJECTS SECTION.



Whirlpool

PROJECT DISCLAIMER: Every effort has been made to ensure that all projects are error free. All the information is presented in good faith, however, no warranty can be given nor results guaranteed. Therefore, we assume no responsibility nor damages that may occur when referring to this pattern. When errors are brought to our attention, we make every effort to correct and post a revision as soon as possible. We suggest you check windhamfabrics.com for pattern updates and to test the pattern prior to making the project. Test templates first, before cutting all the pieces. Free projects are not for resale.

KEY	FABRIC	SKU	YD	CUTTING INSTRUCTIONS	WOF=width of fabric
A		37098-12 chalk	3	(2) 9½" x WOF. Subcut: (36) 2" x 9½" (2) 5" x WOF. Subcut: (36) 2" x 5" (6) 3½" x WOF. Subcut: (108) 2" x 3½" (2) 8" x WOF. Subcut: (36) 2" x 8" (3) 2" x WOF. Subcut: (108) 2" squares (2) 6½" x WOF. Subcut: (36) 2" x 6½"	
B		54026DM-4	1¼	(4) 5" x WOF. Subcut: (72) 2" x 5" (4) 3½" x WOF. Subcut: (72) 2" x 3½"	
C		54027DM-5	1¼	(9) 2" x WOF. Subcut: (36) 2" x 9½" (4) 2" x WOF. Subcut: (36) 2" x 8"	
D		54029DM-4	1¼	(4) 5" x WOF. Subcut: (72) 2" x 5" (4) 3½" x WOF. Subcut: (72) 2" x 3½"	
E		54028DM-7	1¼	(4) 5" x WOF. Subcut: (72) 2" x 5" (4) 3½" x WOF. Subcut: (72) 2" x 3½"	
F		54031D-4	⅝	(6) 2" x WOF. Subcut: (108) 2" squares	
G		54031D-5	1¼	(2) 2" x WOF. Subcut: (36) 2" squares (2) 3½" x WOF. Subcut: (36) 2" x 3½" (10) 2" x WOF	
H		54030DM-1	1	(2) 5" x WOF. Subcut: (36) 2" x 5" (2) 6½" x WOF. Subcut: (36) 2" x 6½"	
I		54025DM-1	2¼	(10) 4½" x WOF (10) 2½" x WOF for binding	
		Backing (#54025DM-1)	8½	Batting: 100" x 100"	



Whirlpool

1/4" Seam Allowance Check

Even if you use a 1/4" foot, your seam allowance may not be accurate!

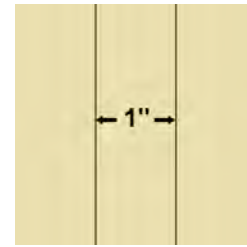
To check if your seam is accurate, cut three 1 1/2" x 3" pieces from scrap fabric.

Sew the pieces together along the 3" side, using what you believe is a 1/4" seam.

Press away from the center piece.

Measure.

The center piece should be exactly 1" wide.



If, when you measure, the center is less than 1", your seam allowance is too large.

If it's more than 1", your seam allowance is too small.

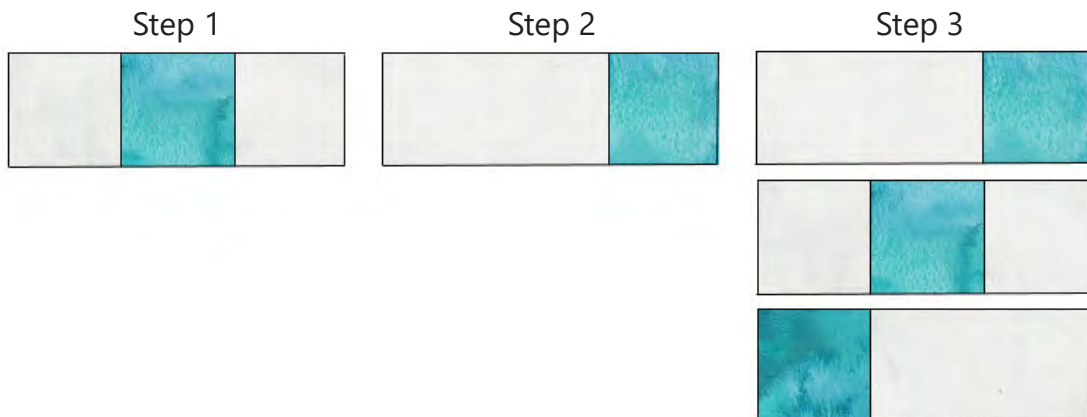
Refer to your machine owner's manual for instructions on changing your needle position.

Repeat the test until your center strip measures exactly 1".

Blocks:

Make 36

1. Stitch two fabric A and one fabric F 2" squares together as shown.
2. Stitch one fabric F 2" square to one fabric A 2" x 3 1/2" rectangle. Make two.
3. Combine the pieces from steps 1 and 2 to complete the block center. Square to 5".

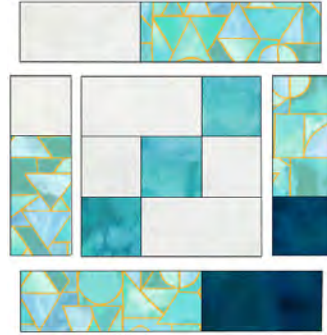


4. Stitch one fabric G 2" square to one fabric E 2" x 3 1/2" rectangle. Add to the right-hand side of the block.
5. Stitch one fabric A 2" square to one fabric E 2" x 3 1/2" rectangle. Add to the left-hand side of the block.
6. Stitch one fabric A 2" x 3 1/2" rectangle to one fabric E 2" x 5" rectangle. Add to the top of the block.
7. Stitch one fabric G 2" x 3 1/2" rectangle to one fabric E 2" x 5" rectangle. Add to the bottom of the block. Square block to 8".



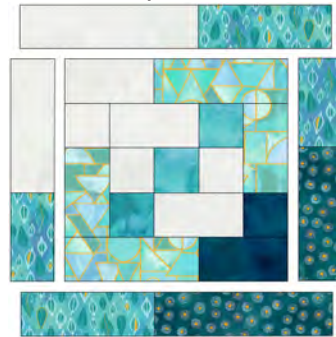
Whirlpool

Steps 4-7



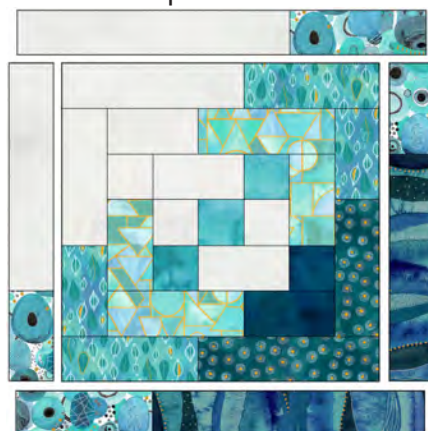
8. Stitch one fabric D 2" x 3½" rectangle to one fabric H 2" x 5" rectangle. Add to the right-hand side of the block.
9. Stitch one fabric A 2" x 5" rectangle to one fabric D 2" x 3½" rectangle. Add to the left-hand side of the block.
10. Stitch one fabric A 2" x 6½" rectangle to one fabric D 2" x 5" rectangle. Add to the top of the block.
11. Stitch one fabric D 2" x 5" rectangle to one fabric H 2" x 6½" rectangle. Add to the bottom of the block. Square block to 11".

Steps 8-11



12. Stitch one fabric B 2" x 3½" rectangle to one fabric C 2" x 8" rectangle. Add to the right-hand side of the block.
13. Stitch one fabric A 2" x 8" rectangle to one fabric B 2" x 3½" rectangle. Add to the left-hand side of the block.
14. Stitch one fabric A 2" x 9½" rectangle to one fabric B 2" x 5" rectangle. Add to the top of the block.
15. Stitch one fabric B 2" x 5" rectangle to one fabric C 2" x 9½" rectangle. Add to the bottom of the block. Square to 13½". Make 36 blocks.

Steps 12-15

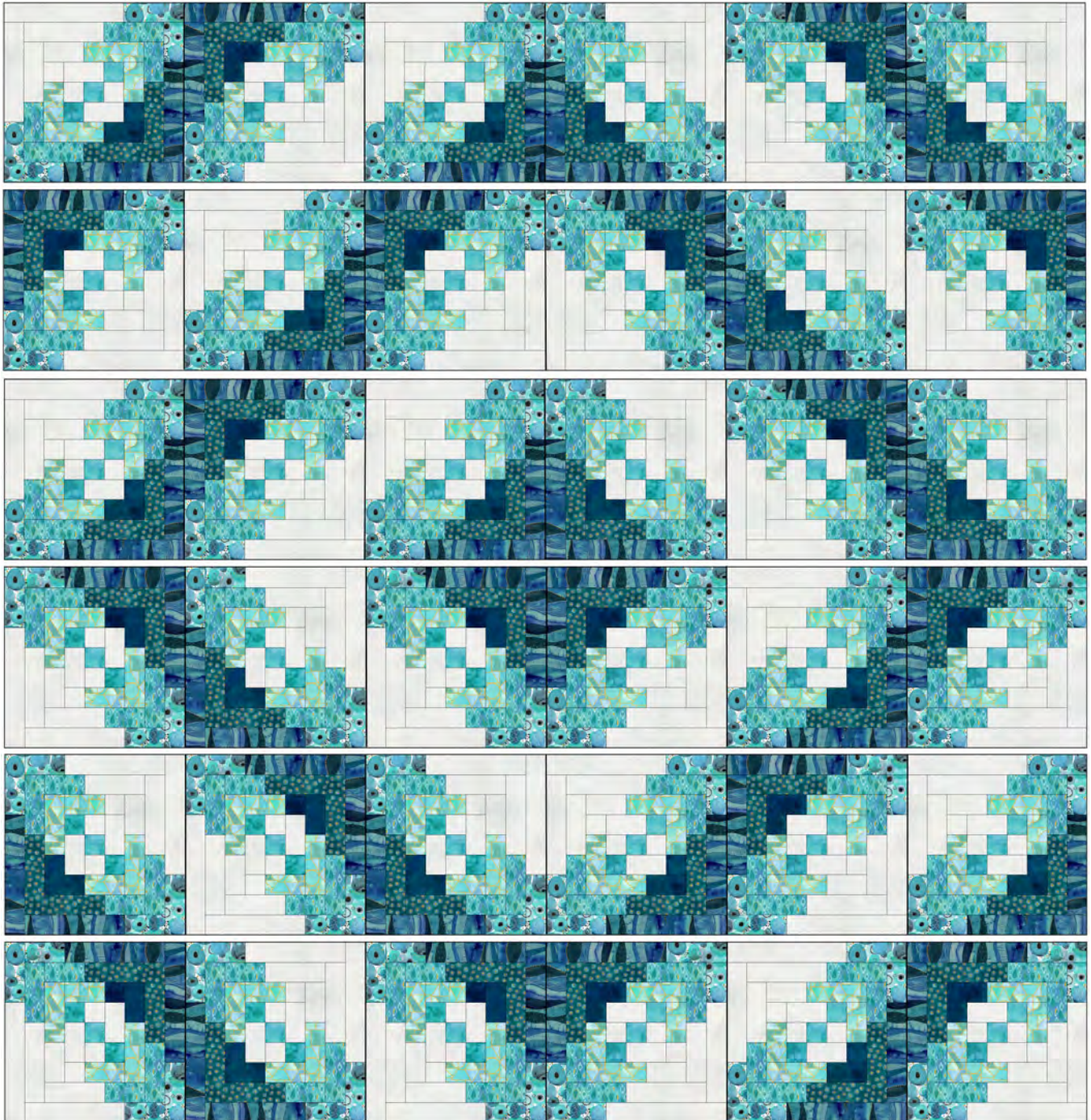




Whirlpool

Assembly:

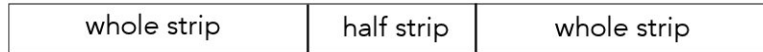
16. Use the diagram below to stitch the blocks together, noting the rotation of each block.





Whirlpool

17. Cut two fabric G 2" x WOF strips in half. Add a whole strip to each end of each piece to make four 2½ strip lengths. Add to the quilt, mitering corners.
18. Cut two fabric I 4½" x WOF strips in half. Add a whole strip to each end of each piece to make four 2½ strip lengths. Add to the quilt, mitering corners.



Finishing:

19. Layer, baste and quilt as desired.
20. Bind with ten fabric I 2½" x WOF strips.

¼ Assembly Diagram

