



Category: Knitted Sweaters and Tops\Knitted Cardigans

Skill Level:



EASY

220 Superwash® Fingering Timeless Light Cardigan

Designed by Cheryl Beckerich

Size:

XS (S, M, L, XL, XXL)

Finished Dimensions

32.5" (35.5, 38.5, 41.5,
44.5, 47.5)" at bust

21" (21, 22, 22, 23, 23)"
in length

Materials:

- Cascade Yarns®
220 Superwash® Fingering;
100% Superwash Merino
Wool; 50 g (1.75 oz) /
219 yds (200 m)
- 6 (6, 7, 7, 7, 8) of color
#62 (Violet Ice)
- US 2.5 (3mm) knitting
needles, or size needed
to obtain gauge
- Stitch holders
- Tapestry needle
- 7 small snaps
- 7 buttons, ½" or smaller



220 Superwash® Fingering
Timeless Light Cardigan | by Cheryl Beckerich



Gauge:

27 sts x 34 rows = 4" in stockinette stitch

29 sts x 37.5 rows = 4" in seed stitch

Dampen swatch with cool water and lay flat to dry prior to measuring gauge.

Abbreviations

BO	= Bind off
CO	= Cast on
K	= Knit
K2tog	= Knit 2 together
Kfb	= Knit into the front and the back of the same stitch
P	= Purl
RS	= Right Side
SSK	= Slip 1 stitch as if to knit, slip a second stitch as if to knit, insert left needle into the front of the 2 slipped stitches and knit the 2 stitches together.
St(s)	= Stitch(es)
WS	= Wrong Side

Pattern Stitches:

Seed Stitch (*over an even number of stitches*)

Row 1: (RS) *K1, P1; repeat from * to end of row.

Row 2: *P1, K1; repeat from * to end of row.

Seed Stitch (*over an odd number of stitches*)

Row 1: (RS) *K1, P1; repeat from * until 1 stitch remains, K1.

Row 2: *K1, P1; repeat from * until 1 stitch remains, K1.

Stockinette Stitch

Knit on the RS, purl on the WS.



220 Superwash® Fingering Timeless Light Cardigan | by Cheryl Beckerich

3 Needle Bind Off:

Turning work inside out, move to 2 needles with ½ of work on each needle. With 2 needles parallel, insert a 3rd needle knitwise into the 1st st of each needle. Wrap the yarn around the needle as if to knit. Knit these 2 sts together and slip them off the needle. Knit the next 2 sts together (same manner). Slip the 1st st on the 3rd needle over the 2nd st and off the needle. Continue until all sts are bound off.

Pattern:

Back:

CO 118 (129, 140, 151, 162, 173) sts, then work 7 rows in Seed st.

Next row is RS. [K14 (13, 13, 13, 13, 13), K2tog] 7 (8, 9, 10, 11, 11) times, knit to end of row.

Work in Stockinette st until back measures 13.5" (13, 13.75, 13.25, 14, 13.5)" from CO.

Shape Armholes:

BO 7 (8, 10, 11, 13, 14) sts at the beginning of the next 2 rows. Decrease 1 st on each end using an SSK at the beginning of the row and a K2tog at the end of the row every RS row 6 (8, 9, 11, 12, 14) times. 85 (89, 93, 97, 101, 106) sts.

Continue in Stockinette st, until armholes measure 7.5" (8, 8.25, 8.75, 9, 9.5)" from initial armhole BO ending with a WS row.

Shape Neck:

Work 22 (23, 24, 25, 26, 27) sts for right shoulder, BO 41 (43, 45, 47, 49, 52) sts for neck, work 22 (23, 24, 25, 26, 27) sts for left shoulder.

Place shoulder sts on holders to join with fronts later.

Left Front:

CO 55 (61, 66, 72, 77, 83) sts, then work 7 rows in seed st.

Next row is RS. [K13 (14, 14, 15, 16, 17), K2tog] 3 (4, 4, 5, 5, 6) times, knit to end of row.

Work in Stockinette st until back measures 13.5" (13, 13.75, 13.25, 14, 13.5)" from CO ending with a WS row.



220 Superwash® Fingering Timeless Light Cardigan | by Cheryl Beckerich

Shape Armholes and Neck:

BO 7 (8, 10, 11, 13, 14) sts, then work to the end of the row.
Decrease 1 st on the neck edge with a SSK this row, then every 4 rows 16 (17, 18, 19, 20, 21) times.
At the same time, decrease 1 st on the armhole edge every RS row with a K2tog 6 (8, 9, 11, 12, 14) times. 22 (23, 24, 25, 26, 27) sts.
Continue until left front armhole measures 7.5" (8, 8.25, 8.75, 9, 9.5)".
Place sts on a holder to join with back later.

Right Front:

CO 55 (61, 66, 72, 77, 83) sts, then work 7 rows in Seed st.
Next row is RS. [K13 (14, 14, 15, 16, 17), K2tog] 3 (4, 4, 5, 5, 6) times, knit to end of row.
Work in Stockinette st until back measures 13.5" (13, 13.75, 13.25, 14, 13.5)" from CO ending with a RS row.

Shape Armholes and Neck:

BO 7 (8, 10, 11, 13, 14) sts, then work to the end of the row.
Decrease 1 st on the armhole edge every RS row with a SSK 6 (8, 9, 11, 12, 14) times, at the same time decrease 1 st on the neck edge with a K2tog this row, then every 4 rows 16 (17, 18, 19, 20, 21) times. 22 (23, 24, 25, 26, 27) sts.
Continue until right front armhole measures 7.5" (8, 8.25, 8.75, 9, 9.5)". Place sts on a holder to join with back later.

Sleeves (make 2):

CO 68 (70, 72, 76, 80, 84) sts, then work 7 rows in Seed st.
Next row is RS. [K13 (14, 14, 15, 16, 17), K2tog] 4 times, knit to end of row.
Continue in Stockinette st increasing 1 st on each end with a KFB in the first st and the second to the last st in each row every 10 (10, 8, 8, 6, 8) rows 9 (10, 12, 13, 14) times. 82 (86, 92, 98, 104, 108) sts.

When sleeve measures 12.5" (13, 13, 13.5, 13.5, 14)" from CO, BO 7 (8, 10, 11, 13, 14) sts at the beginning of the next 2 rows.

Decrease 1 st on each end every RS row 8 (9, 8, 9, 8, 9) times, then every 4 rows 5 (5, 6, 7, 8, 7) times then every RS row 8 (8, 8, 8, 8, 9) times. 26 (26, 28, 28, 30, 30) sts.
BO.



**220 Superwash® Fingering
Timeless Light Cardigan | by Cheryl Beckerich****Finishing:**

Join shoulders with a 3 needle BO.
Sew in sleeves, then sew side and sleeve seams.
Work in loose ends.

Center and Neck Border:

Beginning on bottom right front, pick up sts for border at a rate of 5 sts for every 6 rows along right front and V-neck, continue picking up at a rate of 5 sts for every 6 bound off st along back neck, then 5 sts for every 6 rows along left V-neck and front.
Work 6 rows in Seed st then BO in pattern.

Buttons & Snaps:

If you desire, evenly space and sew top of snaps to the WS of the right front band.
Sew buttons on the top of each snap on the RS of the right front band.
Sew bottom of the snaps to the RS of the left front band to align with the snaps on the right front band.

Blocking:

Dampen with cool water and lay flat to desired dimensions to dry.

Thank you for downloading our free pattern. For more ideas and inspiration,
visit us online at <http://www.cascadeyarns.com> | blog <http://cascadeyarns.blogspot.com/>

Find Cascade Yarns on social:



CASCADE YARNS®

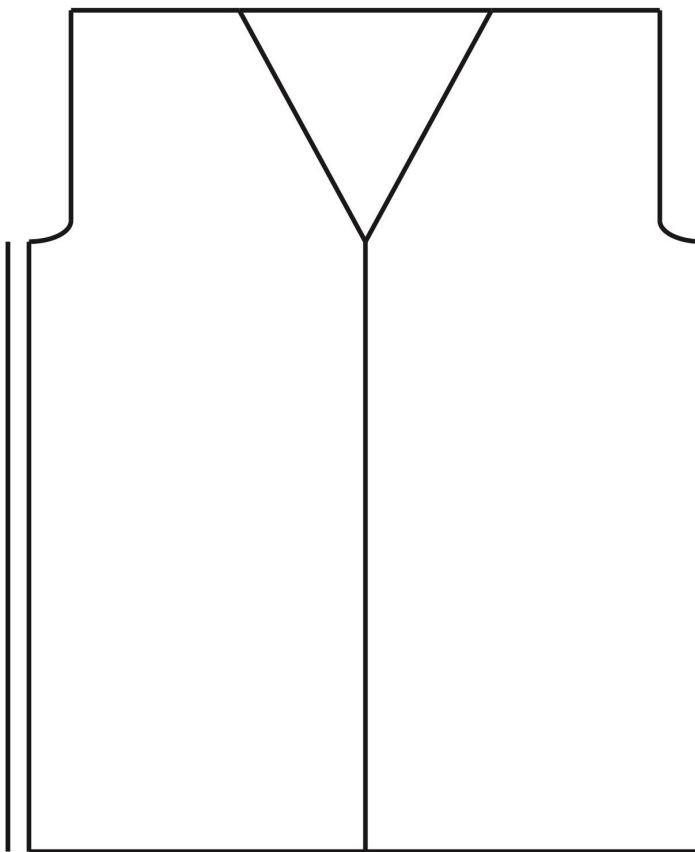
Timeless Light Cardigan Schematic

220 Superwash® Fingering
Timeless Light Cardigan | by Cheryl Beckerich

3.125 (3.25, 3.375, 3.5, 3.625, 3.75) in

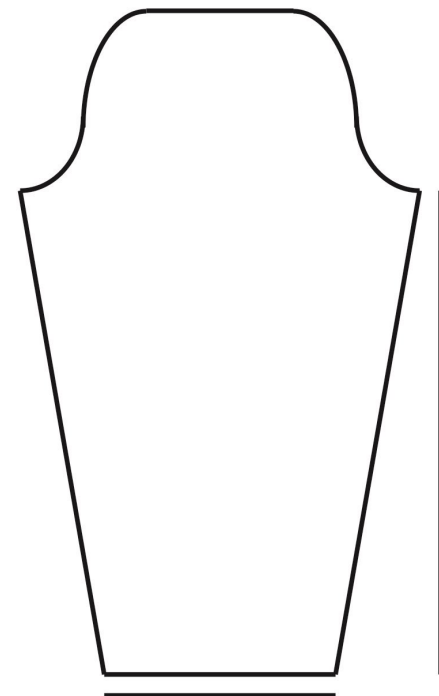
6 (6.5, 6.75, 7, 7.25, 8) in

13.5 (13, 13.75, 13.25, 14, 13.5) in



7.5 (8, 8.25, 8.75, 9, 9.5) in

32.5 (35.5, 38.5, 41.5, 44.5, 47.5) in



12.5 (13, 13, 13.5, 13.5, 14) in

9.25 (9.5, 9.75, 10.5, 11, 11.5) in