

GIGLIO



This sweater is worked entirely in the round, without seams, starting from the neck and with the technique called “stranded knitting” (multi-color processing in which the threads not in use are passed on the WS). The sprout is shaped by means of shortened needle “German”, which make the back longer than the front

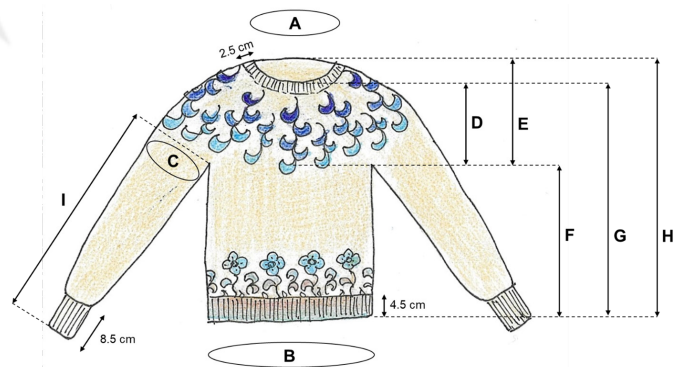


Yarn: Mistral col 871 - Talent 4660

Circular Needles: n. 3 + n 3.25- n 3.5

Weight: 500 g (1 ball Talent, 6 ball Mistral)

Stich Used: is worked seamlessly in rounds from the top down, stranded knitting technique



Sizes: 1 (2, 3, 4, 5, 6, 7, 8, 9). Finished chest circumference 92 (100, 108, 115, 123, 131, 138, 146, 154) cm. The sweater is intended to be worn with 5-10 cm of positive ease.

Yarn: 1 ball (200g) of SESIA Talent col. 4660 (100% virgin wool; 200g=700m), 6 (7, 7, 8, 8, 9, 9, 10, 11) balls of SESIA Mistral col. 871 (100% virgin wool; 50g=175m)

Needles and materials: 3 mm, 3.25 mm and 3.5 mm circular needles in suitable lengths, tapestry needle, one stitch marker, two stitch holders for sleeves (you can use spare needles or waste yarn).

Gauge: 10 cm = 26 stitches and 35 rows/rounds in stockinette stitch with 3.25 mm needles, or 26 stitches and 30 rows/rounds in colorwork with 3.5mm needles.

Level of difficulty: intermediate/advanced

GIGLIO



- A. Neck circumference 42 (43.5, 45, 46.5, 48.5, 50, 51.5, 53, 54.5) cm
- B. Chest circumference 92 (100, 108, 115, 123, 131, 138, 146, 154) cm
- C. Upper arm circumference 32 (34, 36, 39.5, 41.5, 43.5, 47, 49, 50.5) cm
- D. Yoke length at front 23.5 (24, 24.5, 25, 25.5, 26, 26.5, 27, 27.5) cm
- E. Yoke length at back 27 (27.5, 28, 28.5, 29, 29.5, 30, 30.5, 31) cm
- F. Body length from armhole 30 (30.5, 31, 31, 31.5, 31.5, 32, 32.5, 32.5) cm
- G. Front length 53.5 (54.5, 55.5, 56, 57, 57.5, 58.5, 59.5, 60) cm
- H. Back length 57 (58, 59, 59.5, 60.5, 61, 62, 63, 63.5) cm
- I. Arm length from armhole 43.5 (43.5, 43.5, 44.5, 44.5, 44.5, 45.5, 45.5, 45.5) cm

Abbreviations and stitches explanation

k = knit.

p = purl.

st, sts = stitch, stitches.

M = stitch marker.

k2tog = knit two stitches together.

ssk = slip first stitch as if to knit, slip second stitch as if to knit (slip each stitch independently), move the two stitches back to left needle, knit them together through the back loop.

M1inc = make 1 increase. With left needle lift up the horizontal strand between the last worked stitch and the next stitch from front to back and knit it through the back loop.

BLinc = backward loop increase. You can work this increase with right hand or left hand. With left hand: make a loop of working yarn around left index finger from front to back, insert right needle from back to front into the back of the loop, then remove your finger to create a new stitch. With right hand: make a loop of working yarn around right index finger from front to back, rotate your right index finger clockwise to close the loop, insert right needle into that loop from front to back and remove your finger to create a new stitch. Use this increase to cast on underarm stitches.

yf sl1yo = move the yarn to the front, slip the next stitch purlwise, make a yarn over. If the next stitch is a purl stitch, bring the yarn back to the front passing between the needles. The slipped stitch and yarn over count as one stitch from now on and, together, they will be referred as a double stitch.

GIGLIO



Instructions

Neck and yoke set up (MISTRAL)

With 3 mm needles and MISTRAL cast on 120 (124, 128, 132, 136, 140, 144, 148, 152) sts. Place a stitch marker (M) for beginning/end of round and prepare for joining in the round.

Work 10 rounds in rib: * k2, p2 **, repeat from * to ** to the end of round.

Switch to 3.25 mm needles.

Size 1

Move to next section.

Size 2

Work an increasing round as follows: (M1inc, k21) repeat 5 times, M1inc, k19.

[6 sts increased, 130 total sts]

Knit 1 round, then move to next section.

Size 3

Work an increasing round as follows: (M1inc, k11) repeat 11 times, M1inc, k7.

[12 sts increased, 140 total sts]

Knit 2 rounds, then move to next section.

Size 4

Work an increasing round as follows: (M1inc, k7) repeat 18 times, k6.

[18 sts increased, 150 total sts]

Knit 3 rounds, then move to next section.

Size 5

Work an increasing round as follows: (M1inc, k5, M1inc, k6) repeat 12 times, k4.

[24 sts increased, 160 total sts]

Knit 4 rounds, then move to next section.

Size 6

Work an increasing round as follows: (M1inc, k4, M1inc, k5) repeat 15 times, k5.

[30 sts increased, 170 total sts]

Knit 5 rounds, then move to next section.

Size 7

Work an increasing round as follows: (M1inc, k4) repeat 36 times.

[36 sts increased, 180 total sts]

Knit 6 rounds, then move to next section.

Size 8

Work an increasing round as follows: (M1inc, k3, M1inc, k4) repeat 21 times, k1.

[42 sts increased, 190 total sts]

Knit 7 rounds, then move to next section

Size 9

Work an increasing round as follows: * (M1inc, k3) repeat 12 times, k2 **, repeat from * to ** four times in total.

[48 sts increased, 200 total sts]

GIGLIO



Yoke (MISTRAL and TALENT)

For all sizes, knit an increasing round as follows: (M1inc, k5) repeat to the end of round.

[24 (26,28,30,32,34,36,38,40) sts increased; 144 (156, 168, 180, 192, 204, 216, 228, 240 total sts)]

Knit 1 round. Switch to 3.5 mm needles.

Work from "Chart A", introducing TALENT. Work in stranded knitting, alternating yarns according to chart. Repeat chart 12 (13, 14, 15, 16, 17, 18, 19, 20) times in each round.

At the end of "Chart A" you have 360 (390, 420, 450, 480, 510, 540, 570, 600) total sts.

At the end of "Chart A" cut TALENT and proceed with MISTRAL. Switch to 3.25 mm needles.

Knit 1 round. At the end of the round, remove M, k8 and place M in this position. This will be the new beginning/end of round. Move to next section.

Short rows (MISTRAL)

Short row 1: k 45 (50, 55, 55, 60, 65, 65, 70, 75), turn.

Short row 2: yf sl1yo, p to M, slip M, p 45 (50, 55, 55, 60, 65, 65, 70, 75), turn.

Short row 3: yf sl1yo, k to M, slip M, k to the double stitch, k the two loops of the double stitch together, k18 (19, 21, 22, 24, 25, 27, 28, 30), turn.

Short row 4: yf sl1yo, p to M, slip M, p to the double stitch, p the two loops of the double stitch together, p18 (19, 21, 22, 24, 25, 27, 28, 30), turn.

Repeat the last two rows 4 more times.

Last short row: yf sl1yo, k to M.

Knit 1 (1, 1, 3, 3, 3, 5, 5, 5) round/rounds before moving to the next section. When you come across the last two double stitches, k the two loops of the double stitch together.

Separation of body and sleeves (MISTRAL)

K 54 (59, 64, 68, 73, 78, 82, 87, 92), place 72 (77, 82, 89, 94, 99, 106, 111, 116) sts on a spare needle or on waste yarn, cast on (use the BLinc method) 12 (12, 12, 14, 14, 14, 16, 16, 16) sts, k108 (118, 128, 136, 146, 156, 164, 174, 184), place 72 (77, 82, 89, 94, 99, 106, 111, 116) sts on a spare needle or on waste yarn, cast on 12 (12, 12, 14, 14, 14, 16, 16, 16) sts, K 54 (59, 64, 68, 73, 78, 82, 87, 92).

Now you have 240 (260, 280, 300, 320, 340, 360, 380, 400) sts on working needles for the body.

Body: plain section (MISTRAL)

Knit 44 (45, 46, 47, 48, 49, 50, 51, 52) rounds with MISTRAL, or until work measures 12.5 (13, 13, 13.5, 13.5, 14, 14.5, 14.5, 15) cm from armhole.

Size 1

Move to next section.

Size 2

Knit one round decreasing 4sts evenly spaced (use the k2tog decreasing method). Move to next section. [256 total sts]

Size 3

Knit one round decreasing 1st (use the k2tog decreasing method). Move to next section. [279 total sts]

Size 4

Move to next section.

GIGLIO



Size 5

Move to next section.

Size 6

Knit one round increasing 1st (use the M1inc method). Move to next section. [341 total sts]

Size 7

Move to next section.

Size 8

Knit one round increasing 4sts evenly spaced (use the M1inc method). Move to next section.
[384 total sts]

Size 9

Knit one round increasing 3sts evenly spaced (use the M1inc method). Move to next section.
[403 total sts]

Body: section with colorwork (MISTRAL and TALENT)

For all sizes, knit one round with MISTRAL, ending 8sts before the end of the round. Place M in this position. This will be the new beginning/end of round. Switch to 3.5 mm needles.

Sizes 1, 4 and 7

Work from "Chart B.1", introducing TALENT. Work in stranded knitting, alternating yarns according to chart. Repeat chart eight times for size 1, ten times for size 4 and twelve times for size 7. At the end of "Chart B.1" cut MISTRAL and proceed with TALENT.

Sizes 2, 5 and 8

Work from "Chart B.3", introducing TALENT. Work in stranded knitting, alternating yarns according to chart. Repeat chart eight times for size 2, ten times for size 5 and twelve times for size 8. At the end of "Chart B.3" cut MISTRAL and proceed with TALENT.

Sizes 3, 6 and 9

Work from "Chart B.2", introducing TALENT. Work in stranded knitting, alternating yarns according to chart. Repeat chart nine times for size 3, eleven times for size 6 and thirteen times for size 9. At the end of "Chart B.2" cut MISTRAL and proceed with TALENT.

Body: final section (TALENT)

Switch to 3.25 mm needles.

Size 1

Knit one round. [240 total sts]

Size 2

Knit one round increasing 4sts evenly spaced (use the M1inc method). [260 total sts]

Size 3

Knit one round increasing 1st (use the M1inc method). [280 total sts]

Size 4

Knit one round. [300 total sts]

Size 5

Knit one round. [320 total sts]

GIGLIO



Size 6

Knit one round decreasing 1st (use the k2tog decreasing method). [340 total sts]

Size 7

Knit one round. [360 total sts]

Size 8

Knit one round decreasing 4sts evenly spaced (use the k2tog decreasing method). [380 total sts]

Size 9

Knit one round decreasing 3sts evenly spaced (use the k2tog decreasing method). [400 total sts]

For all sizes: knit 9 rounds. Switch to 3 mm needles.

Work 16 rounds in rib: * k2, p2 **, repeat from * to ** to the end of round.

Bind off in rib.

Sleeves (MISTRAL)

Sleeves are worked entirely with MISTRAL.

Move the stitches from one stitch holder to 3.25 mm working needles. Pick up one st for each underarm st and place a stitch marker (M) for beginning/end of round in the middle as follows: pick up 6 (6, 6, 7, 7, 7, 8, 8, 8) sts, place M, pick up 6 (6, 6, 7, 7, 7, 8, 8, 8) sts.

Now you have 84 (89, 94, 103, 108, 113, 122, 127, 132) sts on working needles for the first sleeve. Knit 7 rounds.

Knit a decreasing round as follows: k2, ssk, k to last 4sts, k2tog, k2. [2sts decreased]

Repeat these 8 rounds (7 plain rounds followed by a decreasing round) for 10 (10, 10, 12, 12, 12, 14, 14, 14) times in total. [64 (69, 74, 79, 84, 89, 94, 99, 104) total sts]

Knit 42 (42, 42, 30, 30, 30, 18, 18, 18) rounds, or until sleeve measures 35 (35, 35, 36, 36, 36, 37, 37, 37) cm from armhole. Switch to 3 mm needles.

Work a decreasing round as follows.

Size 1: (k2tog, k2) repeat 16 times or to the end of round.

[16 sts decreased; 48 total sts]

Size 2: (k2tog, k2) repeat 17 times or until only 1 st remains before the end of round, k1.

[17 sts decreased; 52 total sts]

Size 3: (k2tog, k2, k2tog, k1) repeat 10 times or to last 4 sts, k2tog, k2tog.

[22 sts decreased; 52 total sts]

Size 4: (k2tog, k2, k2tog, k1) repeat 11 times or to last 2 sts, k2tog.

[23 sts decreased; 56 total sts]

Size 5: (k2tog, k1) repeat 28 times or to the end of round.

[28 sts decreased; 56 total sts]

Size 6: (k2tog, k1) repeat 29 times or to last 2 sts, k2.

[29 sts decreased; 60 total sts]

Size 7: (k2tog, k1, k2tog, k2tog, k1) repeat 11 times or to last 6 sts, k2, k2tog, k2.

[34 sts decreased; 60 total sts]

Size 8: (k2tog, k1, k2tog, k2tog, k1) repeat 11 times or to last 11 sts, k2, k2tog, k2, k2tog, k3.

[35 sts decreased; 64 total sts]

GIGLIO



Size 9: (k2tog, k1, k2tog, k2tog, k1) repeat 12 times or to last 8 sts, (k2tog) repeat 4 times.
[40 sts decreased; 64 total sts]

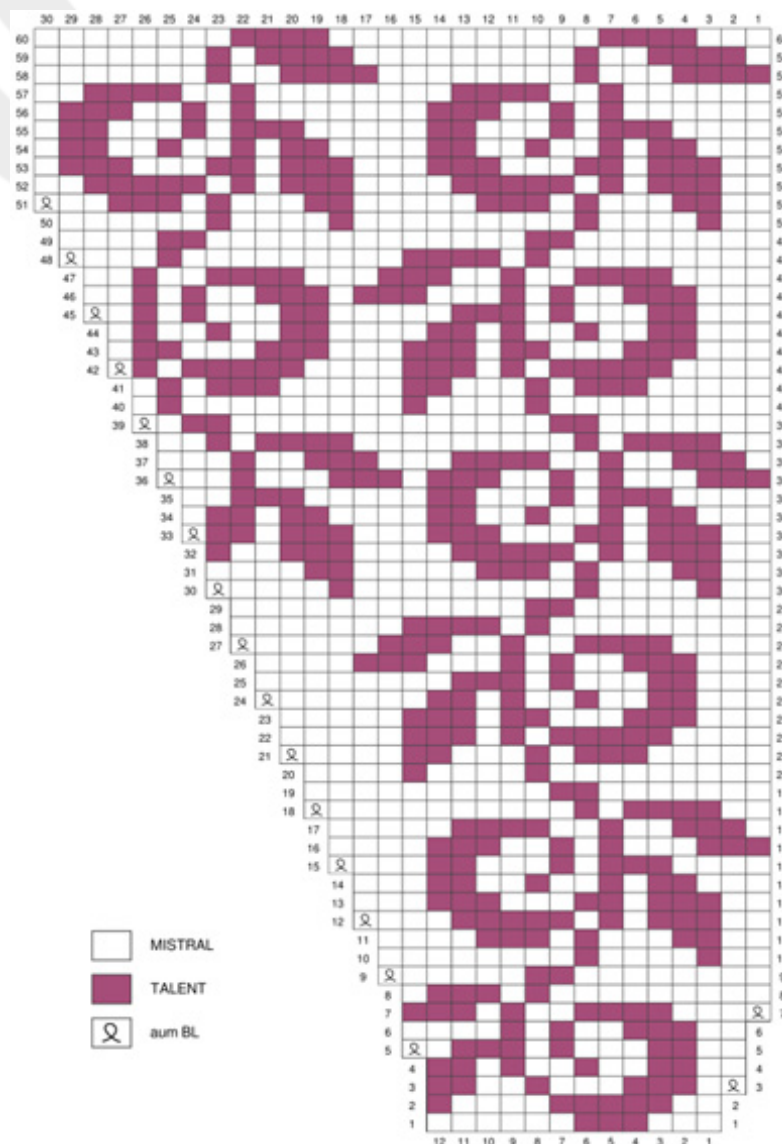
For all sizes: knit 30 rounds in rib: * k2, p2 **, repeat from * to ** to the end of round.

Bind off in rib.

Knit the second sleeve in the same way.

NOTES FOR READING CHARTS CORRECTLY. Each square represents a stitch. Charts must be read from the bottom up and from right to left. The key is the same for all charts. Make BLinc with MISTRAL.

CHART A



GIGLIO

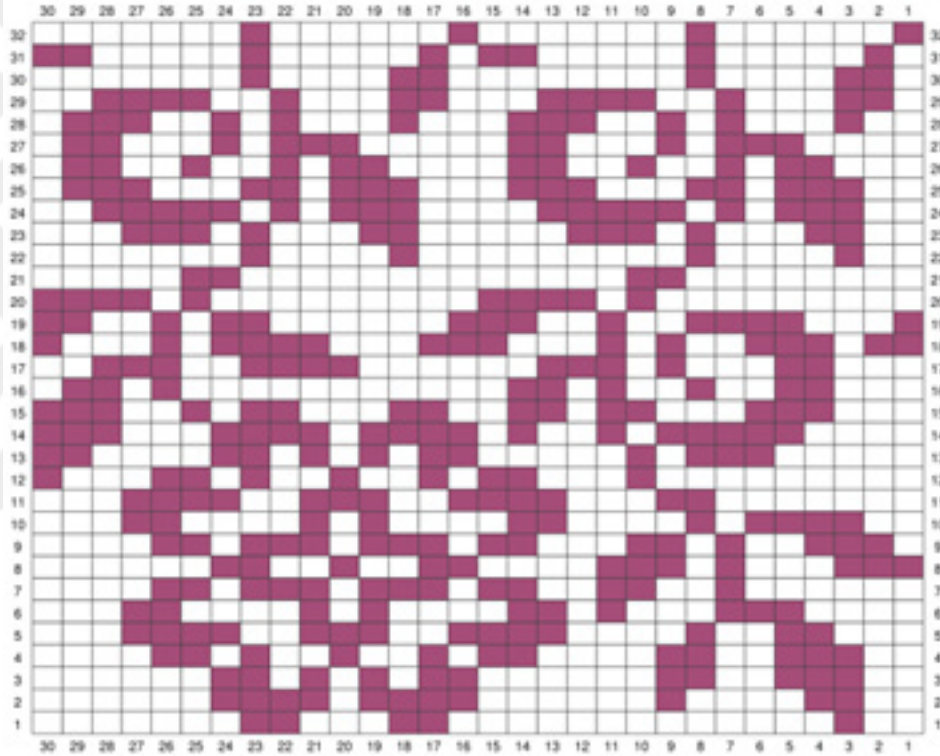


CHART B.1

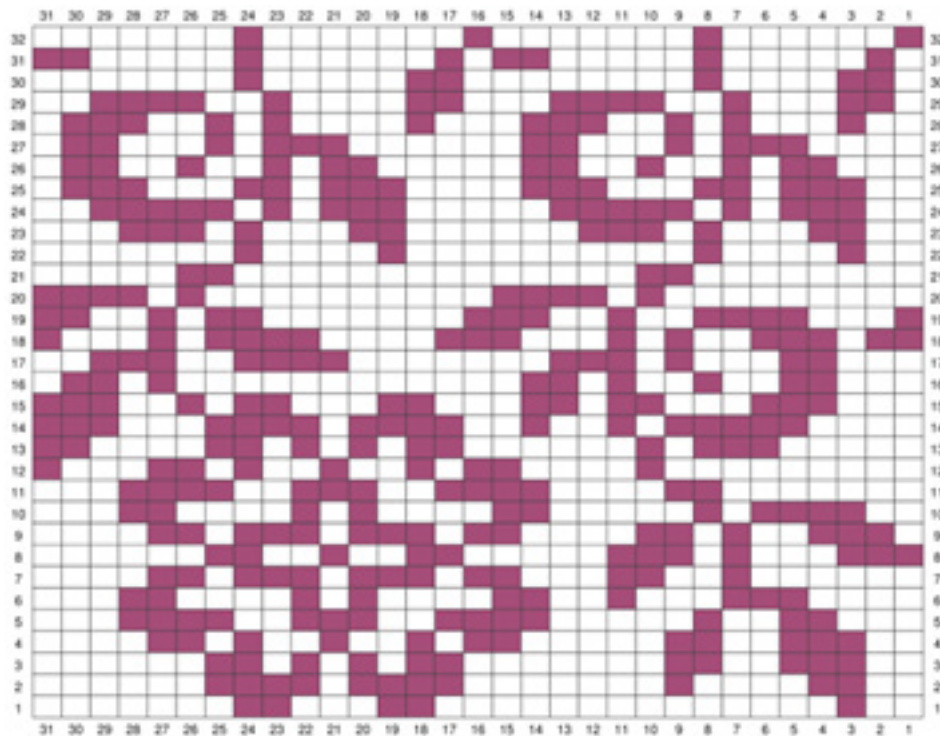
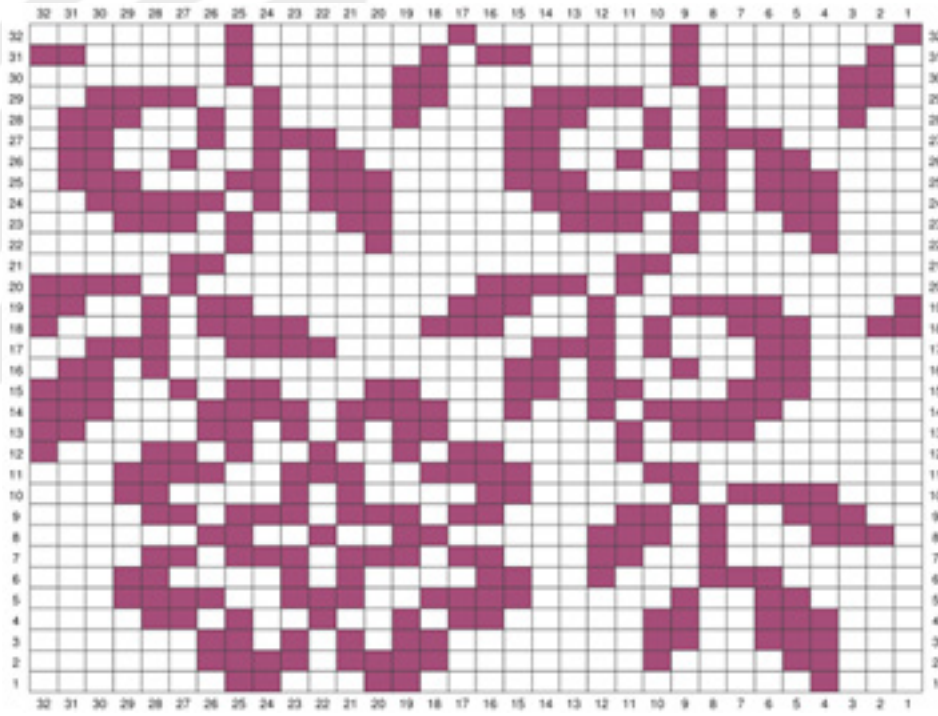


CHART B.2

GIGLIO



CHARTB.3